

**SPECIFICATION – SECTION 08 35 13 ACCORDION FOLDING DOORS****PART 1 – GENERAL****1.1 RELATED DOCUMENTS**

- A. Drawings and general provisions of the Contract including General and Supplementary Conditions and Division 01 Specification Selections apply to this Section.

**1.2 SUMMARY**

- A. This Section includes:
  - 1. Furnish and install accordion folding partitions as indicated in drawings.
- B. Related Sections include the following:
  - 1. Division 03 Sections for concrete tolerances required.
  - 2. Division 05 Sections for primary structural support, including pre-punching of support members by structural steel supplier per operable partition supplier's template.
  - 3. Division 06 Sections for wood framing and supports, and all blocking at head and jambs as required.
  - 4. Division 09 Sections for wall and ceiling framing at head and jambs.

**1.3 QUALITY ASSURANCE**

- A. Installer Qualifications: An experienced installer who is certified in writing by the operable partition manufacturer, as qualified to install the manufacturer's partition systems for work similar in material design, and extent to that indicated for this Project.
- B. Preparation of the opening shall conform to the dimensions specified, plumb, level, and in accordance to building practices.
- C. Acoustical Performance: Test partitions in an independent acoustical laboratory in accordance with ASTM E90 test procedure and classified in accordance with ASTM E413 to attain no less than the STC rating specified. Provide a complete and unedited written test report by the testing laboratory upon request.
- D. The folding partition must be manufactured by a certified ISO-9001-2015 company or an equivalent quality control system.

**1.4 REFERENCE STANDARDS**

- A. ASTM International
  - 1. ASTM E557 Standard Practice for Architectural Application and Installation of Operable Partitions.
  - 2. ASTM E90 – Standard Test Method for Laboratory Measurement of Airborne Sound Transmission Loss of Building Partitions and Elements.

- 3. ASTM E84 – Surface Burning Characteristics of Building Materials.
- 4. ASTM E413 – Classification for Rating Sound Installation
- B. International Standards Organization
  - 1. ISO 14021 – Environmental Labels and Declarations – Self-Declared Environmental Claims (Type II Environmental Labeling).
  - 2. ISO 14025:2011-10, Environmental Labels and Declarations – Type III Environmental Declarations – Principles and Procedures
  - 3. ISO 14040 :2009-11 Environmental Management – Life Cycle Assessment – Principles and Framework.
  - 4. ISO 14044 :2006-10, Environmental Management – Life Cycle Assessment – Requirements and Guidelines.
  - 5. ISO 21930 – Sustainability in Buildings and Civil Engineering Works – Core Rules for Environmental Product Declarations of Construction Projects and Services.

**1.5 SUBMITTALS**

- A. Product Data: Material descriptions, construction details, finishes, installation details, and operating instructions for each type of operable partition, component, and accessory specified.
- B. Shop Drawings: Show location and extent of operable partitions. Include plans, elevations, sections, details, attachments to other construction, and accessories. Indicate dimensions, weights, conditions at openings, and at storage areas, and required installation, storage, and operating clearings. Indicate location and installation requirements for hardware and track, including floor tolerances required and direction of travel. Indicate blocking to be provided by others.
- C. Setting Drawings: Show imbedded items and cutouts required in other work, including support beam punching template.
- D. Samples: Color samples demonstrating full range of finishes available by architect. Verification samples will be available in same thickness and material indicated for the work.
- E. Furnish materials that generate the least amount of pollution.
  - 1. Furnish products and materials that have third party verified environmental product declarations (EPD's). Consider products and materials that have optimized environmental performance (reduced life cycle impacts). Products without an EPD or other disclosure documentation are not acceptable.

- F. Buy American: Folding door to be manufactured in the United States in compliance with applicable U.S. Federal Trade Commission and U.S. Customs Service and Border Protections regulations and be labeled "Made in America".

#### 1.6 DELIVERY, STORAGE, AND HANDLING

- A. Clearly mark packages and panels with numbering systems used on Shop Drawings. Do not use permanent markings on panels.
- B. Protect partitions during delivery, storage, and handling to comply with manufacturer's direction and as required to prevent damage.

#### 1.7 WARRANTY

- A. Provide written warranty by manufacturer of operable partitions agreeing to repair or replace any components with manufacturing defects.
- B. Warranty period: Two (2) years.

### PART 2 – PRODUCTS (SOUNDMASTER)

#### 2.1 MANUFACTURERS, PRODUCTS, AND OPERATION

- A. Manufacturers: Subject to compliance with requirements, provide products by the following:
  - 1. Modernfold, Inc.
- B. Doors to be manufactured in the U.S.A.
- C. Products: Subject to compliance with requirements, provide the following product:
  - 1. Soundmaster #8 Accordion Folding Partition
  - 2. Soundmaster #12 Accordion Folding Partition

#### 2.2 OPERATION

- A. Soundmaster #8: Manually operated, top supported, accordion folding.
- B. Soundmaster #12: Manually operated, top supported, accordion folding.

#### 2.3 CONSTRUCTION

- A. Shall consist of steel hinge plates welded to 3/16-inch (5 mm) diameter vertical steel rods, with a single row of plates at the bottom and top with intermediate rows at approximately 42-inch (1067 mm) on center. Partitions 10'-0" (3048 mm) high or over have a double row of hinge plates at the top. A high tensile alloy steel trolley yoke, functioning as a hinge pin at required intervals, supports the frame assembly.
- B. Sound Transmission Class: Laboratory acoustical performance of the folding partition shall have been tested in an independent acoustical laboratory, in accordance with ASTM E90 test procedure, classified in accordance with ASTM E413 and shall have attained an STC rating of no less than:
  - 1. Soundmaster 8 – 39 STC
  - 2. Soundmaster 12 – 40 STC

#### 2.4 PARTITION FINISHES

- A. Finish: Face finish shall be (select as required):
  - 1. Reinforced heavy-duty vinyl with woven backing weighing not less than 30 ounces per lineal yard.

- 2. Acoustical, non-woven needle punch carpet, with fused fibers to prevent unraveling or fray of material.
- 3. Wall covering and upholstery fabric with surface treatment to resist stains.
- 4. Customer's own material (subject to factory approval).

- B. Partition Trim: Exposed sweep strips of one consistent color.

#### 2.5 SOUND SEALS

- A. Shall be pairs of three-layer flexible sweep strips at top and bottom. Vertical female sound channel shall be polyurethane foam lined.
- B. Sound Insulation: 24-gage, V-grooved steel panels and heavy-duty flame resistant acoustical membrane. Each panel attaches to the frame with steel leaf fasteners.
- C. Pairs of Flexible Sweep Strips: Shall be provided at top and bottom of the partition. Air release for air trapped within the folding partition shall be accomplished during operation by a series of 3/8-inch (9.5 mm) diameter holes through the lead post molding.

#### 2.6 HARDWARE

- A. Grip type hand pulls shall be die-cast zinc, satin chrome finish. Extruded aluminum or plastic hand pulls will not be accepted.

#### 2.7 SUSPENSION SYSTEM

- A. #5 (Soundmaster 8 only), #6, or #7 Suspension System, track and trolley sizes matched to the size of the partition.
  - 1. Suspension Tracks: Shall be of a continuous "C" channel shaped track, connected to the structural support.
  - 2. Carriers: The accordion folding partition shall be suspended from the track by two-wheel intermediate and four-wheel lead trolley assemblies.

#### 2.8 OPTIONS

- A. Electrical Operation: Electrically operated Soundmaster 8 and Soundmaster 12 shall be operated in 11-gage steel track with flanged steel ball bearing trolleys. Drive mechanism shall be roller chain type. All auxiliary equipment for electrical operation including track with integral chain guides, roller chain, drive unit and motor key operated control, overload safety device, and drive sprocket assemblies shall be supplied by partition manufacturer. Power supply circuits, wiring, and electrical connection shall be work by the electrical contractor.
- B. Jamb-Lock: Back post to be secured to the wall by the "Jamb-Lock" mechanism concealed within the back post to provide a quick means of releasing and reattaching the partition for cleaning and decorative purposes.
- C. Locks: Satin chrome hand pulls with (select) manufacturer's standard locks or master-keyed locks. Master-keyed cylinders furnished by others. Locks shall be an integral part of the pull; Manually Operated Partitions Only.

## PART 2 – PRODUCTS (MODERNFOLD)

### 2.1 MANUFACTURERS, PRODUCTS, AND OPERATION

- A. Manufacturers: Subject to compliance with requirements, provide products by the following:
  - 1. Modernfold, Inc.
- B. Doors to be manufactured in the U.S.A.
- C. Products: Subject to compliance with the requirements, provide the following product:
  - 1. Modernfold #800 Accordion Folding Partition.
  - 2. Modernfold #1200 Accordion Folding Partition.

### 2.2 OPERATION

- A. Modernfold #800: Manually operated, top supported, accordion folding.
- B. Modernfold #1200: Manually operated, top supported,, accordion folding.

### 2.3 CONSTRUCTION

- A. Shall consist of steel hinge plates welded to 3/16-inch (5 mm) diameter vertical steel rods, with a single row of plates at the bottom and top with intermediate rows at approximately 42-inch (1067 mm) on center. Partitions 13'-0" (3048 mm) high or over have a double row of hinge plates at the top. A high tensile alloy steel trolley yoke, functioning as a hinge pin at required intervals, supports the frame assembly.

### 2.4 PARTITION FINISHES

- A. Finish: Face finish shall be (select as required):
  - 1. Reinforced heavy-duty vinyl with woven backing weighing not less than 30 ounces per lineal yard.
  - 2. Acoustical, non-woven needle punch carpet, with fused fibers to prevent unraveling or fray of material.
  - 3. Wall covering and upholstery fabric with surface treatment to resist stains.
  - 4. Customer's own material (subject to factory approval).
- B. Partition Trim: Exposed sweep strips of one consistent color.

### 2.5 HARDWARE

- A. Grip type hand pulls shall be die-cast zinc, satin chrome finish. Extruded aluminum or plastic hand pulls will not be accepted.

### 2.6 SUSPENSION SYSTEM

- A. #5 (Modernfold 800 only), #6, or #7 Suspension System, track and trolley sizes matched to the size of the partition.
  - 1. Suspension Tracks: Shall be of a continuous "C" channel shaped track, connected to the structural support.
  - 2. Carriers: The accordion folding partition shall be suspended from the track by two-wheel intermediate and four-wheel lead trolley assemblies.

### 2.7 OPTIONS

- A. Electrical Operation: Electrically operated Modernfold 800 and Modernfold 1200 shall be operated in 11-gage steel track with flanged steel ball bearing trolleys. Drive mechanism shall be roller chain type. All auxiliary equipment for electrical operation including track with integral chain guides, roller chain, drive unit and motor key operated control, overload safety device, and drive sprocket assemblies shall be supplied by partition manufacturer. Power supply circuits, wiring, and electrical connection shall be work by the electrical contractor.
- B. Jamb-Lock: Back post to be secured to the wall by the "Jamb-Lock" mechanism concealed within the back post to provide a quick means of releasing and reattaching the partition for cleaning and decorative purposes.
- C. Locks: Satin chrome hand pulls with (select) manufacturer's standard locks or master-keyed locks. Master-keyed cylinders furnished by others. Locks shall be an integral part of the pull; Manually Operated Partitions Only.

## PART 3 – EXECUTION

### 3.1 INSTALLATION

- A. General: Comply with partition manufacturer's written installation instructions, drawings, and approved Shop Drawings.
- B. Install operable partitions and accessories after other finish operations, including painting have been completed.
- C. Defective partitions are not acceptable.

### 3.2 CLEANING AND PROTECTION

- A. Clean partition surfaces upon completing installation of partitions to remove dust, dirt, adhesives, and other foreign materials according to manufacturer's written instructions.
- B. Provide final protection and maintain conditions in a manner acceptable to the manufacturer and installer that ensures operable partitions are without damage or deterioration at time of Substantial Completion.

### 3.3 ADJUSTING

- A. Adjust partitions to operate smoothly, easily, and quietly, throughout the entire operation range. Lubricate hardware and other moving parts.

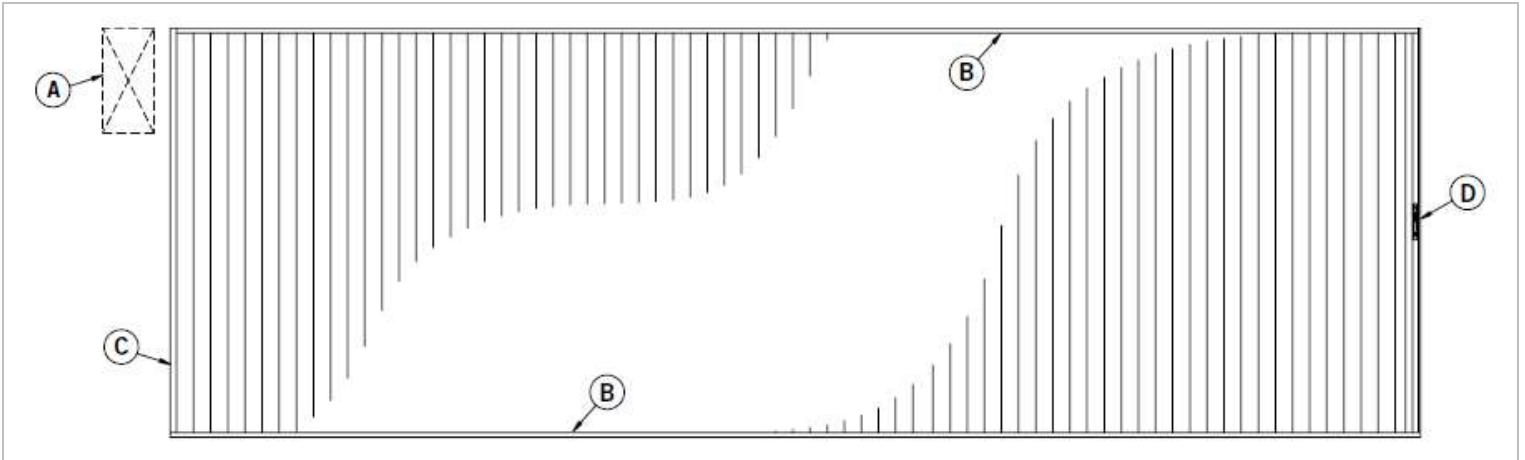
### 3.4 EXAMINATION

- A. Examine flooring, structural support, and opening, with Installer present, for compliance with requirements for installation tolerances and other conditions affecting performance of operable partitions. Proceed with installation only after unsatisfactory conditions have been corrected.

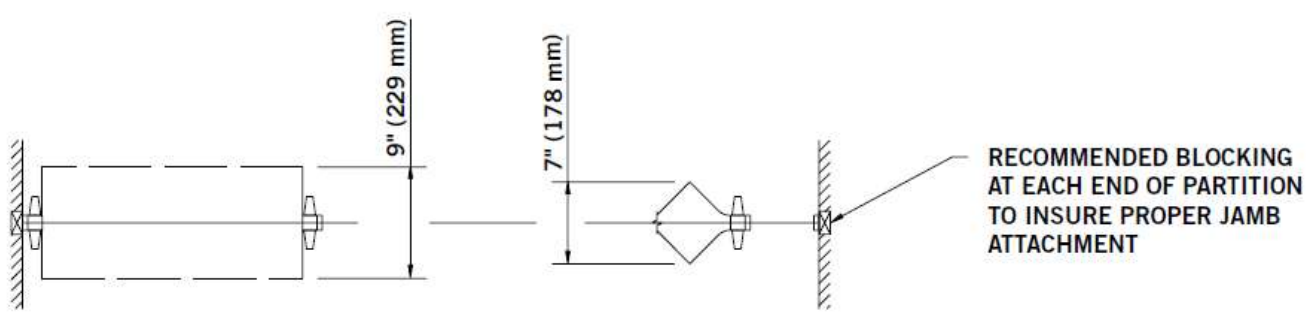
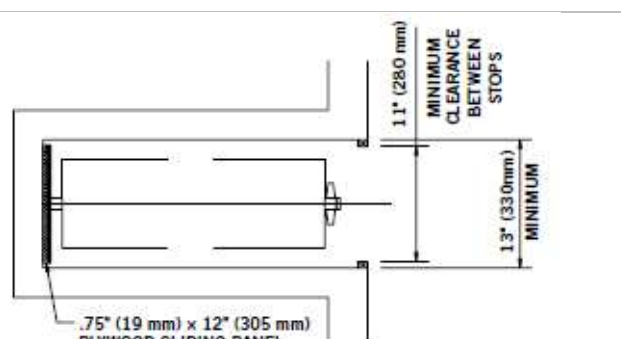
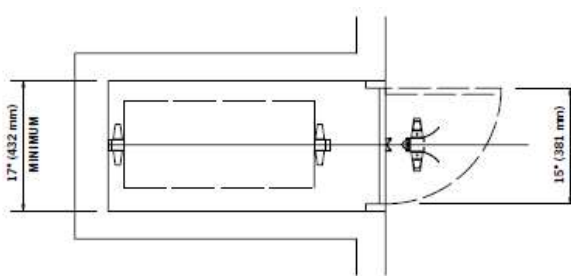
### 3.5 DEMONSTRATION

- A. Demonstrate proper operation and maintenance procedures to Owner's representative.
- B. Provide Operation and Maintenance Manual to Owner's representative

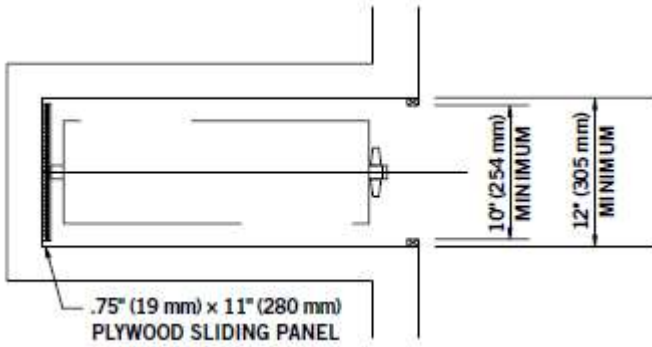
**SOUNDMASTER® & MODERNFOLD® TECHNICAL DATA OPTIONS**



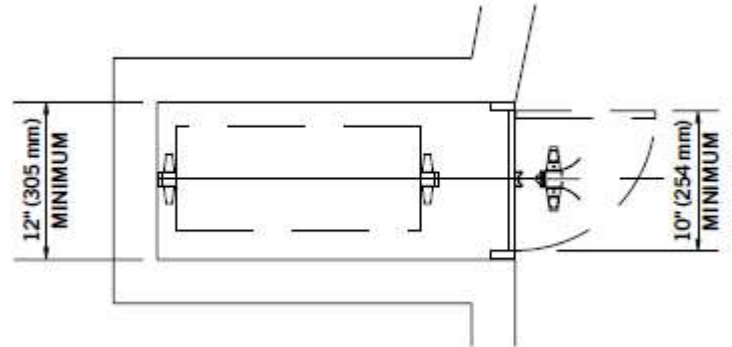
**SOUNDMASTER® & MODERNFOLD® TYPICAL STACK CONFIGURATIONS**

Soundmaster 8 & Modernfold 800 Standard Opening	
 <p>9" (229 mm)</p> <p>7" (178 mm)</p> <p>RECOMMENDED BLOCKING AT EACH END OF PARTITION TO INSURE PROPER JAMB ATTACHMENT</p>	
Soundmaster 8 Sliding Panel Pocket Storage	Soundmaster 8 Rolling Post Storage Pocket
 <p>11" (280 mm) MINIMUM CLEARANCE BETWEEN STOPS</p> <p>1.3" (33.0 mm) MINIMUM</p> <p>.75" (19 mm) x 12" (305 mm) PLYWOOD SLIDING PANEL</p>	 <p>17" (432 mm) MINIMUM</p> <p>1.5" (38.1 mm) MINIMUM</p>

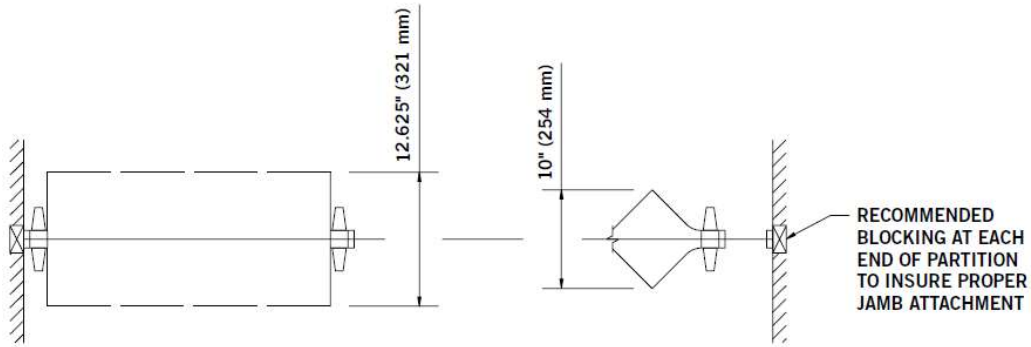
**Modernfold 800 Sliding Panel Storage Pocket**



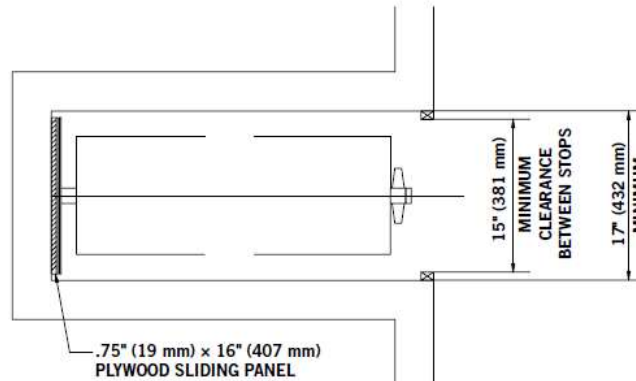
**Modernfold 800 Rolling Post Storage Pocket**



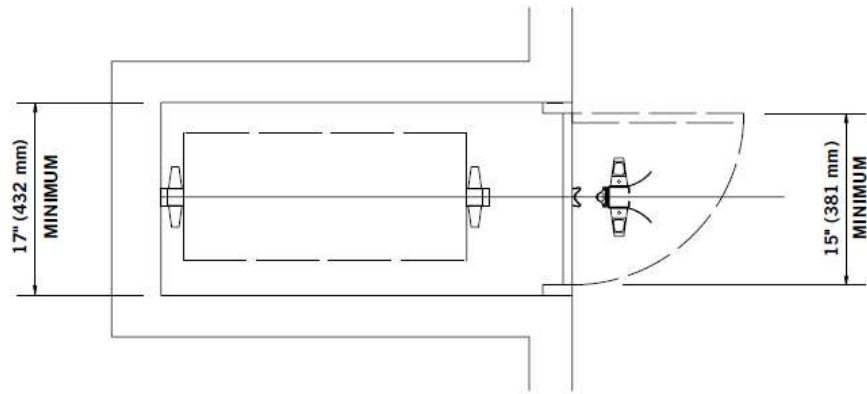
**Soundmaster 12 & Modernfold 1200 Standard Opening**



**Soundmaster 12 & Modernfold 1200 Sliding Panel Storage Pocket**



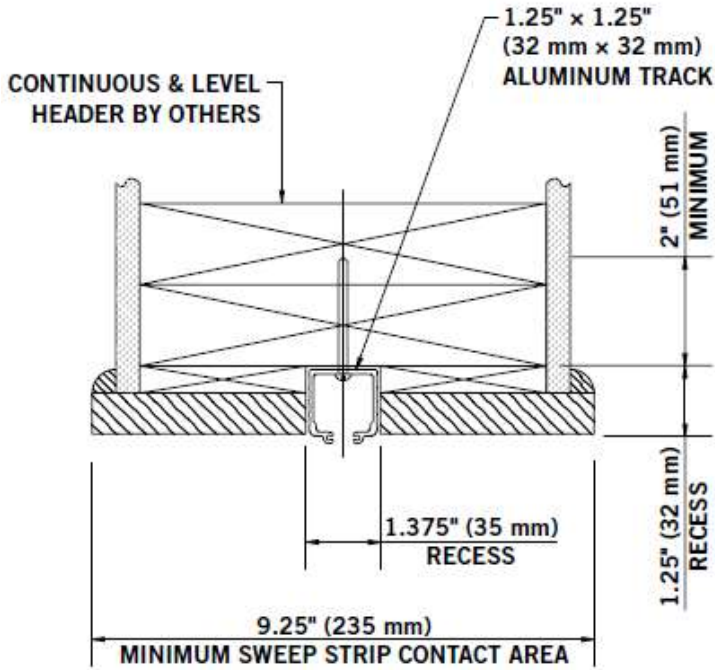
## Soundmaster 12 & Modernfold 1200 Rolling Post Storage Pocket



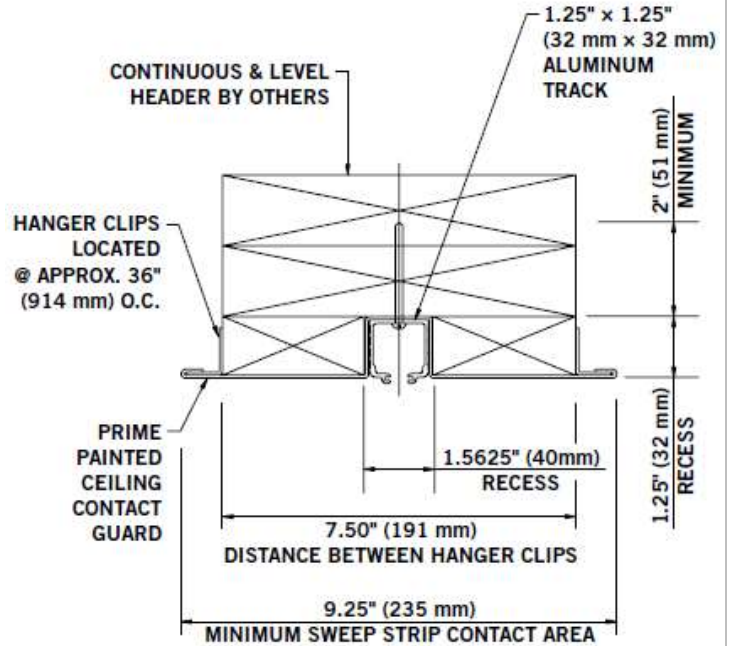
# HEAD DETAILS

## Head Details with #5 Track for Partitions to 33'-2" Wide X 12'-0" (12'-0" for Modernfold 800) Max. Height (66'-4" Wide if a Pair)

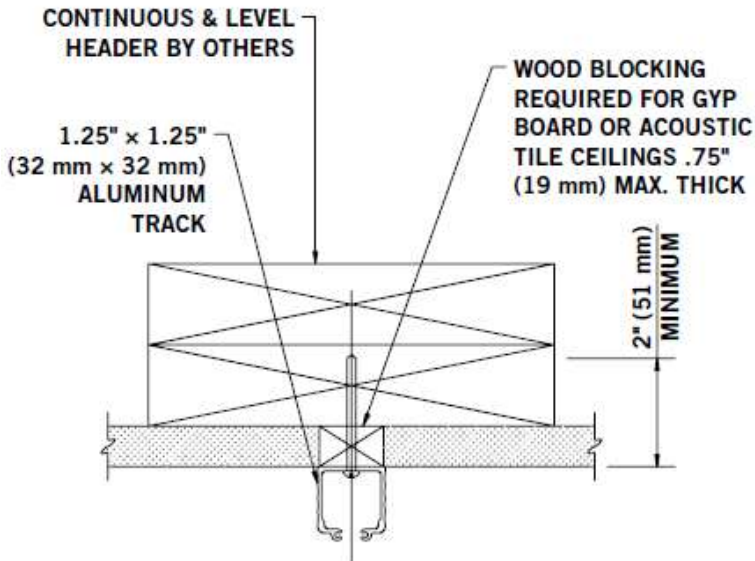
Soundmaster 8 & Modernfold 800  
#5 Track in Wood Cased Beam



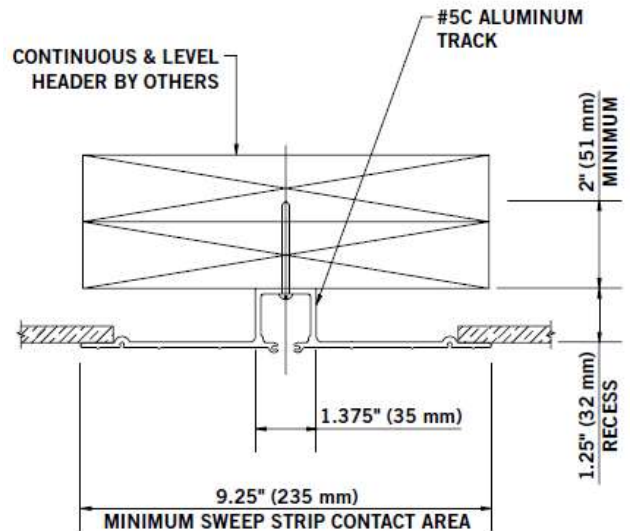
Soundmaster 8 & Modernfold 800  
#5 Track Recessed (w/ Ceiling Guard)



Soundmaster 8 & Modernfold 800  
#5 Track Surface Mounted



Soundmaster 8 & Modernfold 800  
#5C Track Recessed

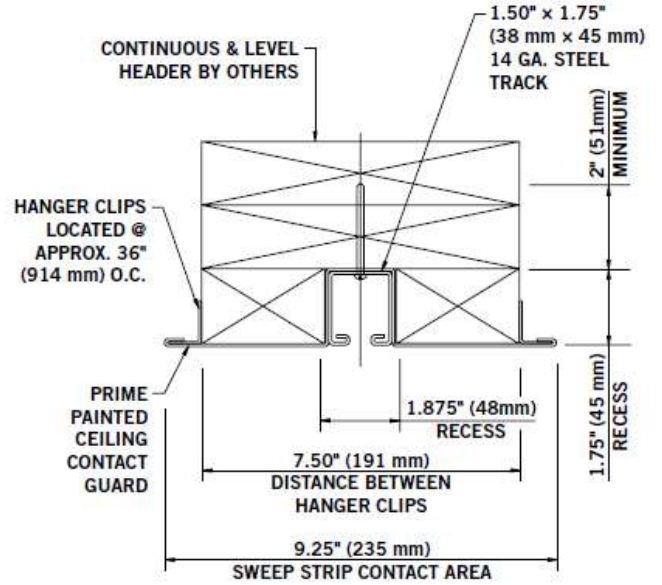
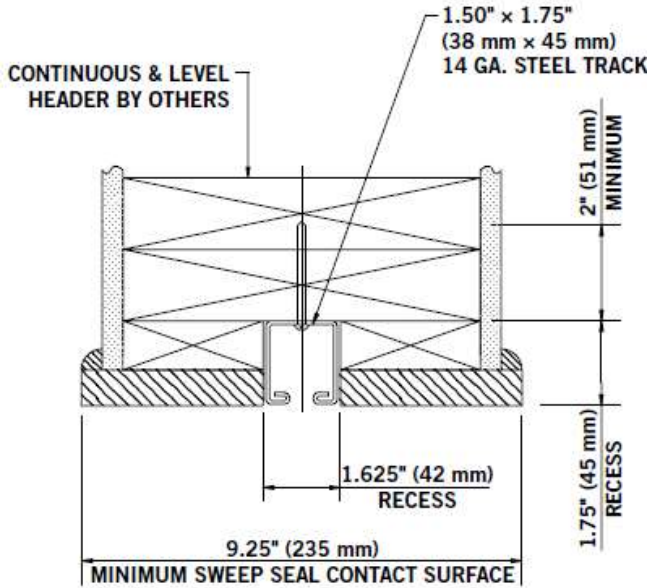


**Note:** Electrical operation required for openings over 400 sq. ft. (37.2 sq. m.) for Soundmaster 8, 360 sq. ft. (33.444 sq. m.) for Soundmaster 12, and 730 sq. ft. ( 67.89 sq. m.) for Modernfold 1200.

**Head Details with #6 Track for Partitions to 33'-2" Wide X 14'-0"  
(66'-4" Wide if a Pair)**

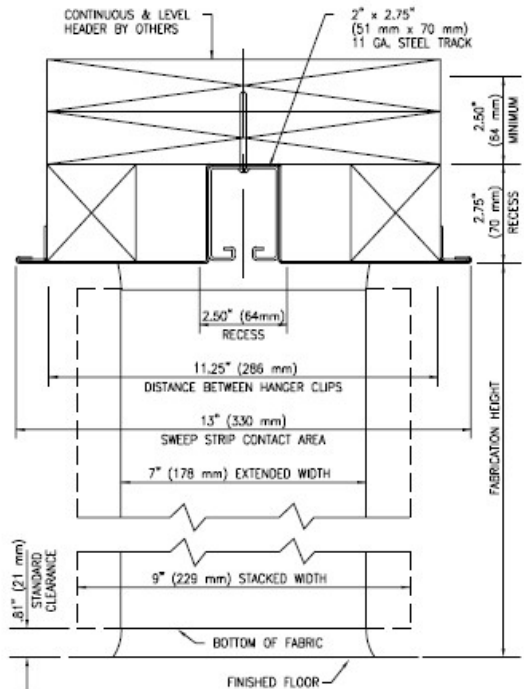
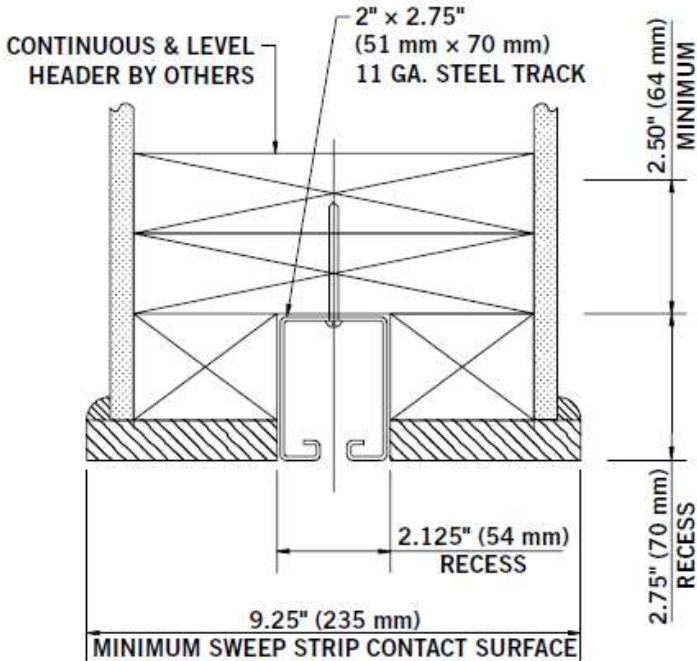
**Soundmaster 8 & Modernfold 800  
#6 Track in Wood Cased Beam**

**Soundmaster 8 & Modernfold 800  
#6 Track Recessed (w/ Ceiling Guard)**



**Soundmaster 8 & Modernfold 800  
#7 Track in Wood Cased Beam**

**Soundmaster 8 & Modernfold 800  
#7 Track Recessed (w/ Ceiling Guard)**

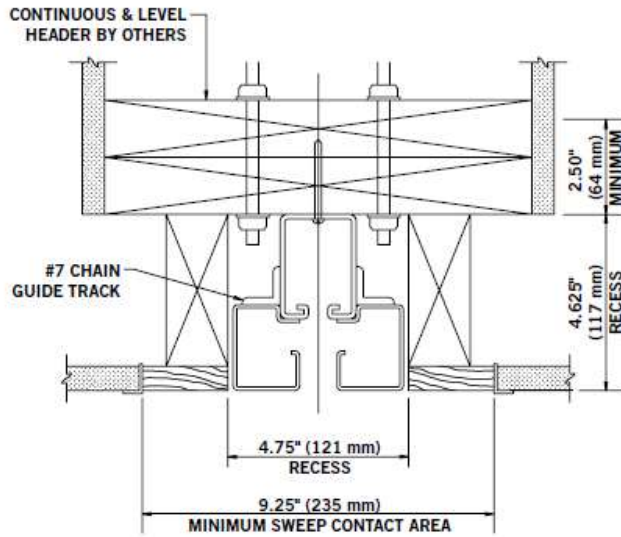


**Note:** Electrical operation required for openings over 400 sq. ft. (37.2 sq. m.) for Soundmaster 8, 360 sq. ft. (33.444 sq. m.) for Soundmaster 12, and 730 sq. ft. ( 67.89 sq. m.) for Modernfold 1200.



**Head Details with #7 Chain Guide Track for Soundmaster Openings over 400 sq. ft. (37.2 sq. m.)**

**Soundmaster 8 & Modernfold 800  
#7 Track Electrically Operated**

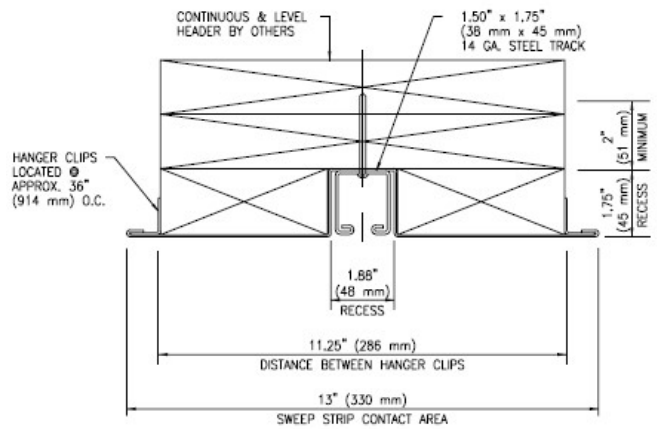
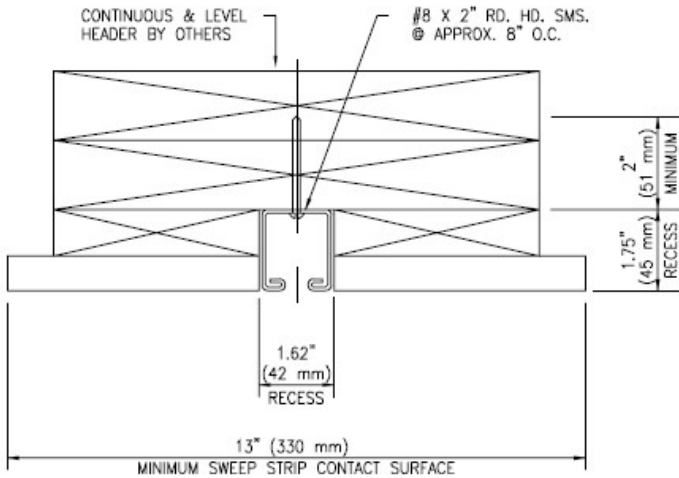


**Head Details with #6 Track - for Soundmaster Partitions to 30'-4" Wide X 12'-0"**

**Max Height (60'-8" Wide if a Pair) – for Modernfold Partitions to 40'-1" Wide X 14'-0" Max. Height (80'-2" Wide if a Pair)**

**Soundmaster 12 & Modernfold 1200  
#6 Track in Wood Cased Beam**

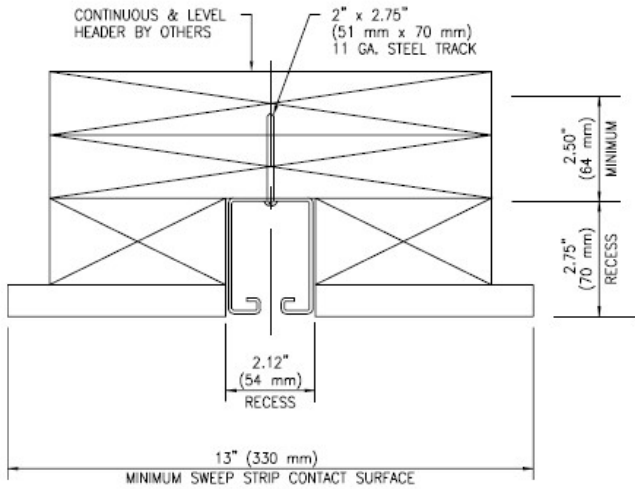
**Soundmaster 12 & Modernfold 1200  
#6 Track Recessed (w/ Ceiling Guard)**



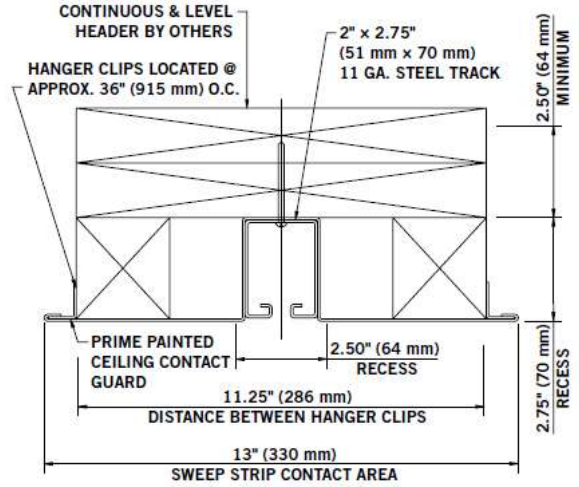
**Note:** Electrical operation required for openings over 400 sq. ft. (37.2 sq. m.) for Soundmaster 8, 360 sq. ft. (33.444 sq. m.) for Soundmaster 12, and 730 sq. ft. ( 67.89 sq. m.) for Modernfold 1200.

## Head Details for optional #7 Track

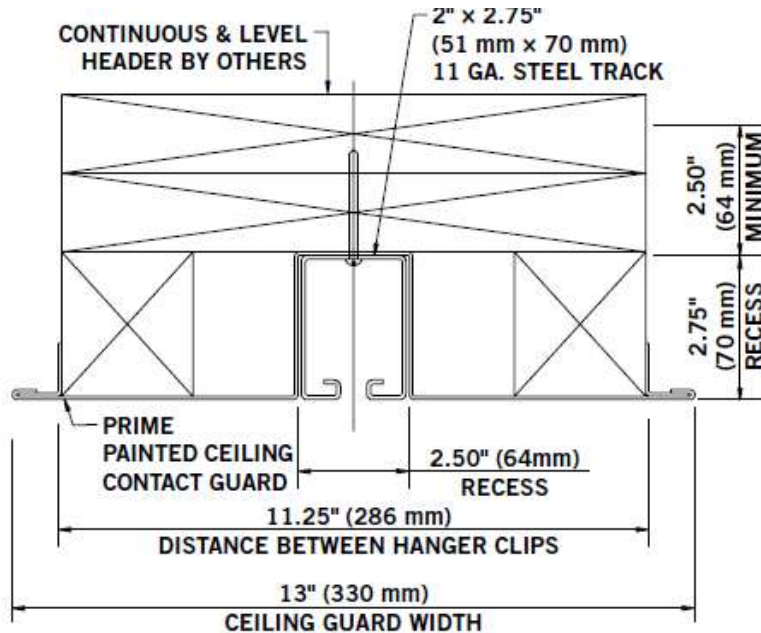
**Soundmaster 12 & Modernfold 1200  
#7 Track in Wood Cased Beam**



**Soundmaster 1200 #7 Track Recessed  
(w/ Ceiling Guard)**



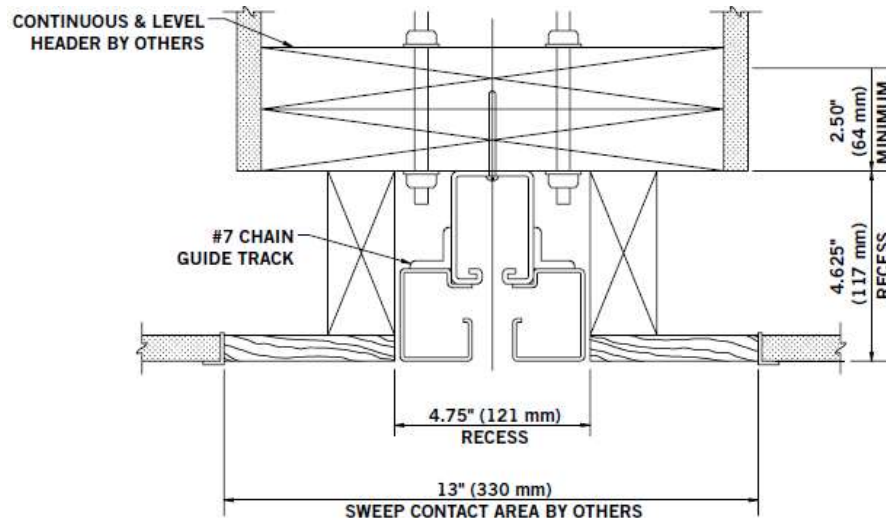
**Soundmaster 12 #7 Track Recessed (w/ Ceiling Guard)**



**Note:** Electrical operation required for openings over 400 sq. ft. (37.2 sq. m.) for Soundmaster 8, 360 sq. ft. (33.444 sq. m.) for Soundmaster 12, and 730 sq. ft. ( 67.89 sq. m.) for Modernfold 1200.

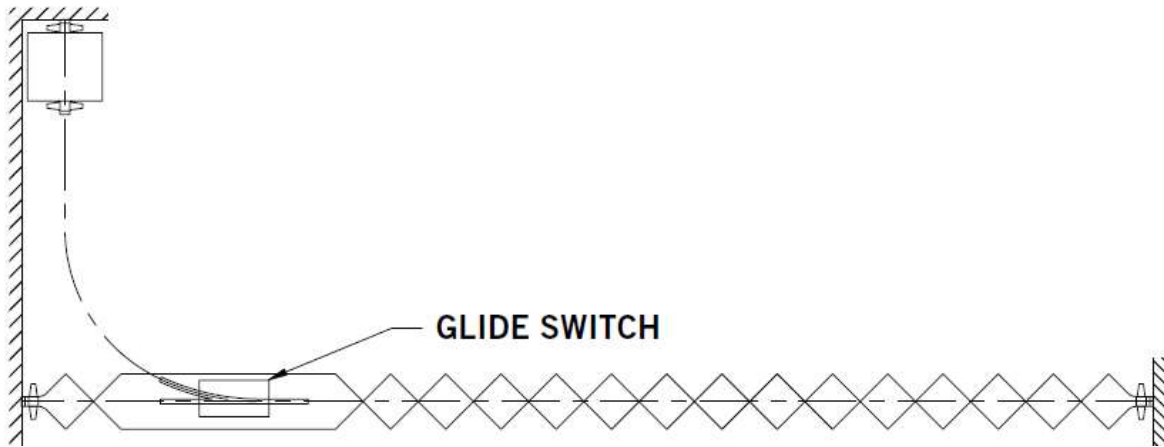
**Head Details with #7 Chain Guide Track for Soundmaster Openings over 360 sq. ft. (33.4 sq. m.) – for Modernfold  
Opens over 730 sq. ft. (66.9 sq. m.)**

**Soundmaster 12 & Modernfold 1200  
#7 Track Electrically Operated**

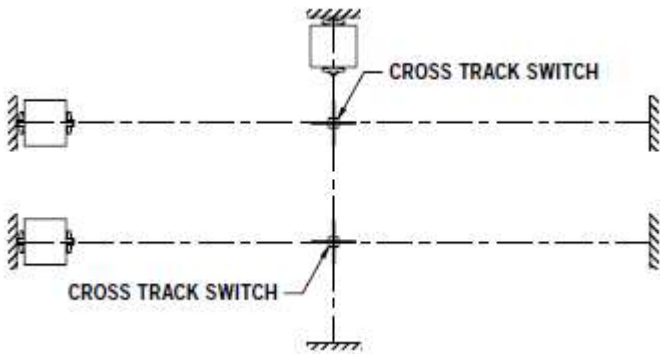


# ACCESSORY TRACK SWITCHES, MEETING POSTS

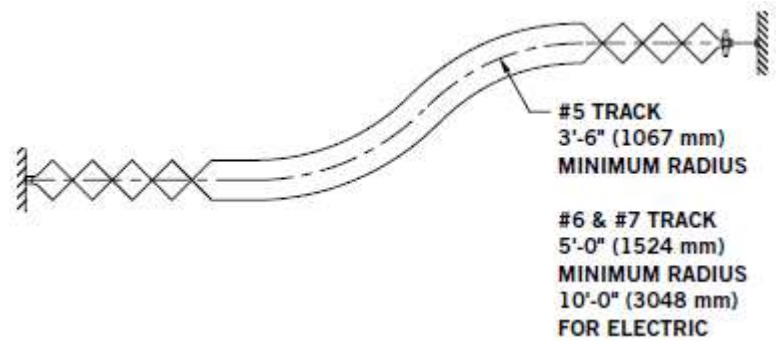
**Glide Switch**



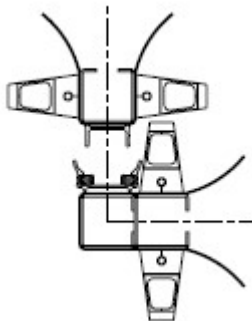
**Cross Track Switch**



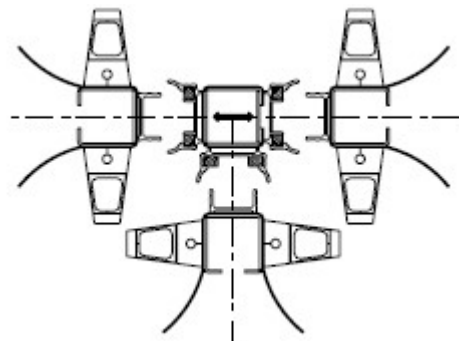
**Curved Track**

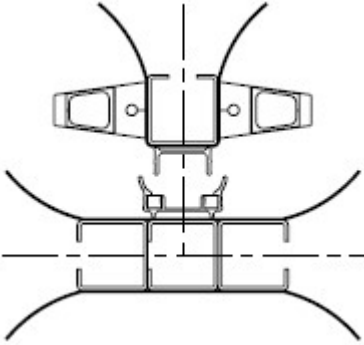
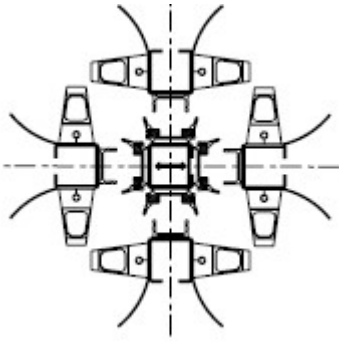


**Attached "L" Post**



**Free Rolling "T" Post**



Triple Intermediate Post	Free Rolling "X" Post
	

**Note:** Handles meeting at perpendicular intersections are at staggered heights to prevent interface.

Form 2387  
11/2023