



ACOUSTI-SEAL®
ENCORE®

Movable Walls



ACOUSTI-SEAL® ENCORE® MOVABLE WALLS.

For generations, architects, interior designers, and building owners have trusted Modernfold to deliver greater functionality and sound control to office buildings, classrooms, hotels, hospitals, retail centers, entertainment venues, and conference and exhibition complexes. Whatever the application, Modernfold's heritage of unique, customized solutions and start-to-finish support provides innovation, creativity, and vision for interior architectural design.



.....1925.....1930.....1932.....1958.....1963.....1966.....1970.....1970.....1971.....1974.....

Circle A Company
Produces Wood
Folding Doors

Henry Oberdorfer buys
Circle A & starts
New Castle Products.
Produces large gym
folding walls

Accordion
Door is born

Soundmaster®

Acousti-Seal®

Acousti-Seal® 40

Vanguard

All Steel
Acousti-Seal® is
announced

Divisiflex

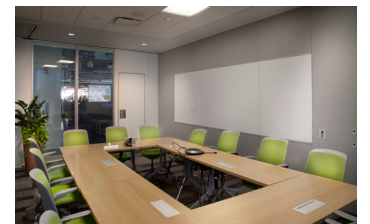
Acousti-Seal®
900 series



Panels nest deeply and seal tightly to create an acoustic barrier with a rating of 56 STC - the highest in the industry.



SureSet™ bottom and top seal mechanism sets automatically for consistent operation on every panel.



Error-proof, automatic setup assures expandable panel smoothly glides into place.

.....1976.....1981.....1993.....1993.....1997.....2008.....2012.....2015.....2016.....2017.....

Gym Wall	Spacesetter	First 2-hour Fire Rated Wall	First operating wall at 46' tall - McCormick Place Chicago, IL	First Double Pass Door w/1-hour fire rating	MOVEO® Acoustical Glass Wall	Acousti-Seal® Encore®	Acousti-Clear®	Acousti-Seal® Encore® Automated	Compactline® with ComfortDrive®
----------	-------------	------------------------------	--	---	------------------------------	-----------------------	----------------	---------------------------------	---------------------------------

ACOUSTI-SEAL® ENCORE® MOVABLE WALLS.

Modernfold's Acousti-Seal® Encore® is offered in three configurations:

SINGLE PANEL



For the largest openings, storage in remote pockets, and for complex partition layouts, the Acousti-Seal® Encore® single panel is the movable wall of choice. Modernfold's single panel systems provide the ultimate in versatility and flexibility, allowing such capabilities as multiple room setups and changes in the location of pass doors and work surfaces.

- Solves complex layout challenges
- Satisfies high ceiling requirements with custom-engineered panels up to 50' high
- Accommodates wide variations in floor conditions
- Simplifies setup and storage with the use of the Smart Track™ suspension system
- Optimal for usage in conference areas, multi-purpose, hospitality, and convention facilities

Acousti-Seal® Encore®	Single Panel
STC	56, 54, 52
Panel Thickness - Nominal	4" (102 mm)
Frame	Roll formed & welded 14/16 gage steel
Finish Options	Vinyl, heavy-duty vinyl, carpet, fabric, customer's own material, full-height marker/tack board, uncovered
Skin/Face Options	Steel
Max. Opening Width	Unlimited
Max. Height	30' (9144 mm) single section
Hanging Weight	8 to 12 lbs/sq.ft.
Track Options	#17, #14, RT100, RT200
Closure Options	Expandable panel closure
Pass Door Selection	Single matching & double matching construction
Top/Bottom Seals	Top: Automatic Bottom: SureSet™ 2" Automatic, SureSet™ 2", 4", & 6" Manual



ACOUSTI-SEAL® ENCORE® MOVABLE WALLS.

PAIRED PANEL



For straight-line openings that do not require multiple locations or offset storage, an Acousti-Seal® Encore® paired panel system is ideal. Quick and easy setup is possible since panels are hinged together in groups of two and move in a straight line within the opening.

- Hinged together in groups of two, facilitating quick, easy setup
- No auxiliary storage track or support required
- Suited for applications that require exceptional durability, acoustic control, and frequent use
- Economical overhead support of straight-line track
- Optional SOSS® invisible hinges eliminate the hinge projection on the panel face, adding safety and a fine line appearance
- Optimal usage in classrooms, meeting rooms or office spaces

Acousti-Seal® Encore®	Paired Panel
STC	56, 54, 52
Panel Thickness - Nominal	4" (102 mm)
Frame	Roll formed & welded 14/16 gage steel
Finish Options	Vinyl, heavy-duty vinyl, carpet, fabric, customer's own material, full-height marker/tack board, uncovered
Skin/Face Options	Steel
Max. Opening Width	Unlimited
Max. Height	24' (7315 mm)
Hanging Weight	8 to 12 lbs/sq.ft.
Track Options	#17, #14, #30
Closure Options	Expandable panel closure
Pass Door Selection	Single matching construction
Top/Bottom Seals	Top: Automatic Bottom: SureSet™ 2" Automatic, SureSet™ 2", 4", & 6" Manual





ACOUSTI-SEAL® ENCORE® MOVABLE WALLS.

AUTOMATED PANELS



Automated panels are connected together in a train, automatically extending as one complete unit. Modernfold's Acousti-Seal® Encore® Automated partitions facilitate quick setup time and provide efficient and convenient separation. Automated operation provides automatic setup without the need for manually moving the partitions into place.

- 56, 54, 52 STC
- Satisfies high ceiling requirements with custom-engineered panels up to 40' high utilizing #20 track
- Fully automatic operation
- Premium field acoustics
- Smooth operation
- Presto® Package Safety System including touchpad operation (See Presto® Package Supplement for details)
- Operable top and bottom seals
- State-of-the-art safety systems
- Optimal for usage in conference areas, schools, gyms, hospitality, board rooms, and convention spaces

Acousti-Seal® Encore® Automated	Automated	Automated #20
STC	56, 54, 52	56, 54, 52
Panel Thickness - Nominal	4.25" (108 mm)	4.25" (108 mm)
Frame	Roll formed & welded 14/16 gage steel	Roll formed & welded 14/16 gage steel
Finish Options	Vinyl, heavy-duty vinyl, carpet, fabric, customer's own material, full-height marker/tack board, uncovered, primed	Vinyl, heavy-duty vinyl, carpet, fabric, customer's own material, full-height marker/tack board, uncovered, primed
Skin/Face Options	Steel	Steel
Max. Opening Width	133'-9" (single); 267'-0" (pair) 40767 mm; 81382 mm	235'-9" (single); 471'-0" (pair) 71857 mm; 143561 mm
Max. Height	24' (7417 mm)	40' (12294 mm)
Hanging Weight	8 to 12 lbs/sq.ft.	8 to 12 lbs/sq.ft.
Track Options	#14, #30	#20
Closure Options	Electric, hinged, remote closures	Electric, hinged, remote closures
Pass Door Selection	Single matching construction	Single matching construction
Top/Bottom Seals	Top: Automatic Bottom: SureSet™ 2" Automatic: SureSet™ 2" & 4" Touch Seal	Top: Automatic Bottom: SureSet™ 2" Automatic: SureSet™ 2" & 4" Touch Seal







ACOUSTI-SEAL® ENCORE®

OPTIONS AND ACCESSORIES

Modernfold offers a wide variety of standard options and accessories to pair with the new Acousti-Seal® Encore®. Through partnering with various manufacturers and trades, Modernfold has the experience to offer customizable solutions to make your Acousti-Seal® Encore® partitions a perfect fit into any space.

WORK SURFACES

- Marker boards and tack boards available with no vertical trim
- Standard 4'x4' and full-height or custom sizes available

PASS DOORS

- Matching construction
- Single or double configurations
- Acoustical construction
- SOSS® Hinges
- ADA compliant hardware
- Door viewer

SURESET™ SEAL SYSTEM

- Automatic top seal
- Automatic or manual bottom seal
- 120 lb. pressure to floor
- Error-proof setup the first time... every time
- Available in 2" automatic, 2", 4", & 6" manual, or 2" & 4" touch

ACCESSORIES

- Presto® Package
- Push plates
- Recessed exit signs
- Key-locking foot bolts

POCKET DOORS

- Acoustic & non-acoustic solutions to conceal panel storage areas
- Prefabricated with jambs & hardware installed
- Prefinished with all available finish options or uncovered for field finishing

FINISH OPTIONS

- Woven fabrics
- Ribbed wall carpeting
- Vinyl wall covering
- Heavy-duty vinyl wall covering
- Custom material
- Uncovered for field finishing



High performance, long-lasting suspension systems by Modernfold.

Modernfold takes pride in the reliability and durability of all its steel suspension systems. As a result, Modernfold offers a 5-year warranty for #17 Smart Track™ and a 20-year warranty for #14 Smart Track™ and #20 track. Smart Track™ technology, in conjunction with a durable steel suspension, provides easy operation, along with worry-free maintenance.

Smart Track™

Modernfold continues to expand the programming capabilities of the #17 and #14 steel track and trolley systems. Smart Track™ allows the user to solve the most complex layout and switching challenges without the added expense and maintenance requirements of electric or pneumatic switches.

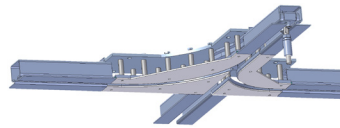
#17 and #14 steel track designs provide added staging and sorting abilities, while reducing operational confusion, setup costs, and trolley stress.

#20 Track

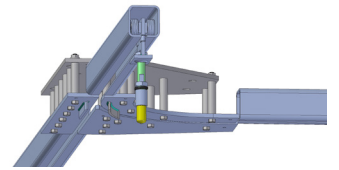
For extreme heights and weight, #20 track provides the same features and benefits as #14 steel track. With the ability to suspend panels as tall as 40', #20 track allows for space division in some of the most challenging environments.

Multi-Directional Systems

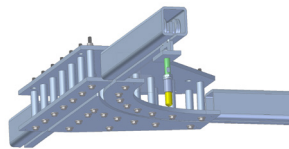
The RT200 and RT100 right angle suspension systems provide an alternative where grid layouts are a must. Right angle track systems allow the user to set up and arrange the partitions in numerous configurations.



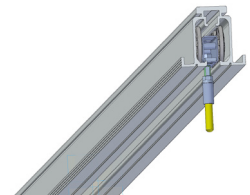
#17 Steel Smart Track™



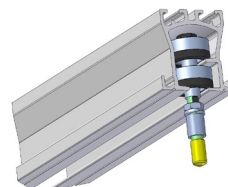
#14 Steel Smart Track™



#20 Steel Track



#30 Aluminum Track



Aluminum RT200 / RT100



ACOUSTI-SEAL® ENCORE®

ACHIEVING OPTIMAL ACOUSTICS



Acousti-Seal® Encore® movable walls have been laboratory tested to an industry-leading 56 STC... How does that translate into an actual space?

STC or Sound Transmission Class is a two-digit number describing the acoustical control of a partition in a sound laboratory setting. This method of ranking is the most widely accepted standard throughout the industry. Virtually every operable partition manufacturer conducts laboratory tests and must be able to validate their product results.

To be certified as a sound laboratory, a lab must be constructed to meet strict ASTM specifications and be certified by a third party. A quality sound laboratory has the ability to take everything out of the surrounding environment except for the partition that is being tested.

Therefore, an STC rating calculates only the partition itself without any of the surrounding construction. This is very important to understand because when a partition is placed into an actual building, that building will not be built to the same standards as the sound laboratory and therefore, will affect the acoustical performance within the space.

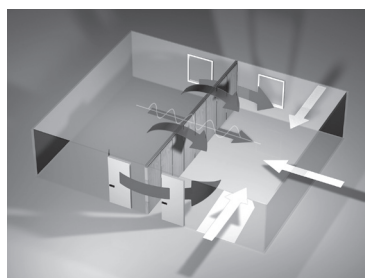
When you consider that an operable wall may represent only 10% of the surface area in a space, you quickly realize that it takes more than just a great operable wall to achieve optimal acoustical control within the space. Acoustical success takes a great acoustical plan for the surrounding construction by the Acoustician, Architect, and General Contractor. One must understand that it is not realistic to duplicate the sound lab environment in an actual space, but duplicating the environment as closely as possible will determine the overall quality of the

acoustical control within each space. The guidelines for duplicating the sound lab environment within an actual space are detailed in the ASTM E557 specification.

ASTM E557 is the blueprint for the successful construction surrounding acoustically rated operable partitions. The ASTM E557 specification can be purchased online at www.ASTM.org and is an absolutely essential guide for your space's overall acoustical success. The STC of your operable partition is basically irrelevant if the surrounding construction is not up to the ASTM E557 specification. You will lose the intended acoustical control of the operable partitions through the surrounding construction and unrecognized construction errors.

The following are the most common construction errors in regards to successful acoustical control and operable partitions:

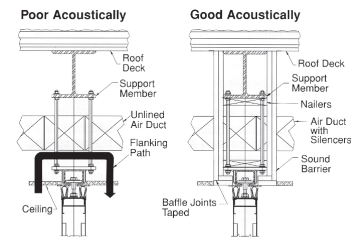
Flanking Paths



Airborne sound can be transmitted to adjoining rooms by way of adjacent doors, door grilles, air handling ducts, ceiling plenums, or floors and walls passing beneath the partition or from room-to-room at the ends of the partitions. These flanking paths can

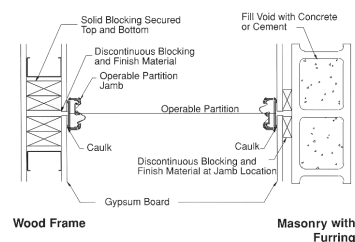
often be eliminated or diminished by installing baffling, sound barriers, or sound-absorbing insulation in key areas.

Above the Partition Track



A plenum above a partition can allow sound to pass up through the ceiling on one side and down to the other side. To eliminate this problem, a barrier (with a sound transmission loss equal to or greater than the partition) should be created above the partition.

Partition-to-Wall Connections



Operable partitions use various methods to connect with permanent walls and partitions. These include fixed jambs mounted to the partition or permanent wall, recessed jambs on the permanent surface, and multi-point bulb seals. Whatever the case, provisions should be made to allow for air tight closure against the permanent wall without interference from chair rails, crown moldings, or other surface materials.

For more detailed acoustic information please reference Modernfold's Acoustical Guide Form 2503.







215 West New Road
Greenfield, IN 46140

Tel: 800-869-9685

Email: info@modernfold.com
Website: www.modernfold.com