



MOTORIZED SHADE FINISH OPTIONS



Acousti-Clear® Motorized Shade by Draper® Standard Shade Offering



E Screen™ 5% Openness

E Screen™ is a popular roller shade fabric with a finely spaced, proportional basketweave of stable fiberglass core yarns. It is lightweight, yet strong and stable. With 5% openness, it offers moderate view through capability.



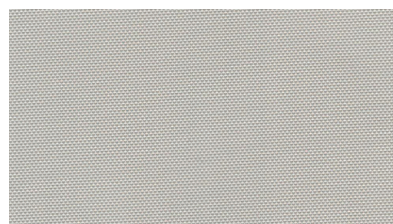
White/White



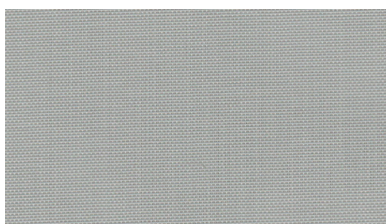
White/Linen



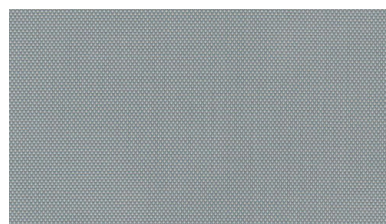
White/Pearl



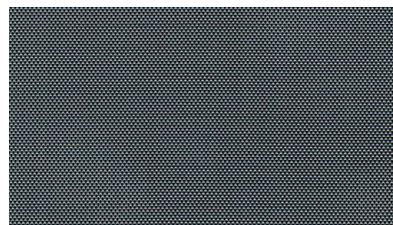
Pearl/Linen



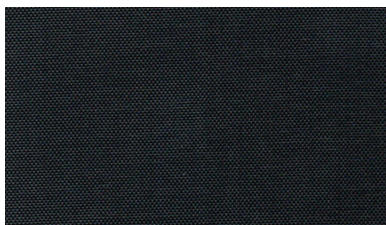
Pearl/Pearl



Pearl/Grey



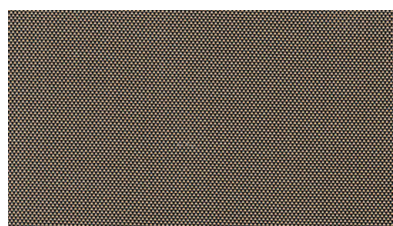
Charcoal/Grey-Stone



Charcoal/Charcoal



Charcoal/Cocoa



Charcoal/Apricot

Specifications	
Item Number	007505
Openness Factor	5%
%Fiberglass / %Vinyl Content	36 / 64
UV Blockage / Approx.	95%
Dimensions	
Width	78" (200 cm), 98" (250 cm), 122" (310 cm)
Weight	10.7 oz/yd ² (363 g/m ²) ± 5%
Thickness	0.016" (0.41 mm) ± 5%
Classifications	
Acoustical	NRC: 0.10; SAA: 0.12

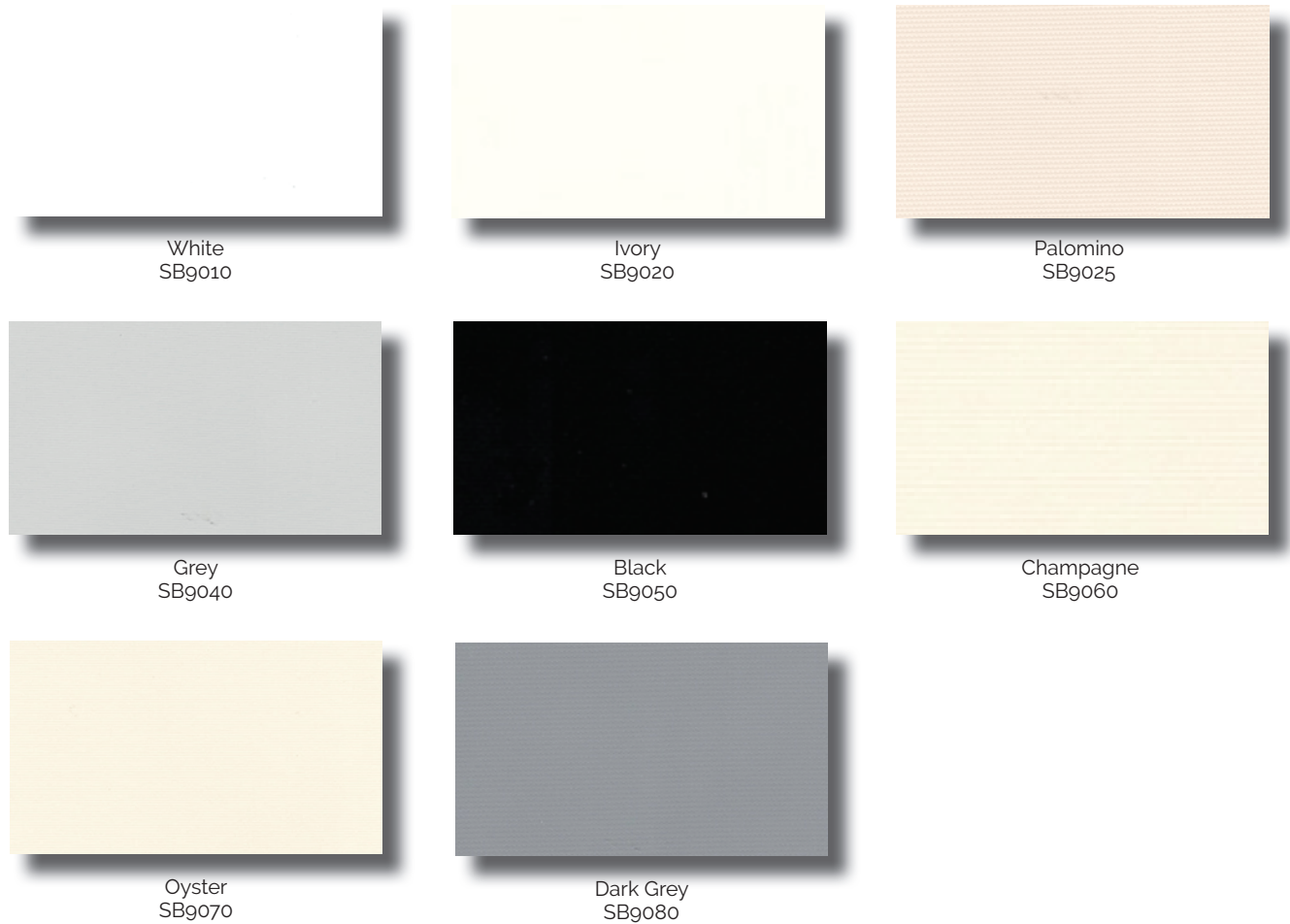
Note: Digital samples are for reference **only** and should be considered illustrative. For a more accurate sample, please contact your local Modernfold Distributor..

Acousti-Clear® Motorized Shade by Draper®

Standard Shade Offering

SunBloc Series SB9000 (Triopak II / Opaque)

The SunBloc SB9000 room-darkening window shade fabrics are constructed of tough woven fiberglass coated on both sides with durable, sun-resistant, flexible vinyl. They are flame, fade, and mildew resistant, washable and tear proof.



Technical Data	
Composition	25% fiberglass; 75% PVC coating
Opacity	100%
Shading Coefficient (1/4" glass)	.25
Maximum Width Without Seam:	72"
Fabric Thickness:	0.015"
Weight / Sq. Yd.	12 oz.
Fire Retardant Rating:	NFPA 701 Small Scale and California Title 19
Bacterial, Mold, and Mildew:	ASTM G21 and ASTM 1428 Certified
Environmental Benefits	GreenGuard and GreenGuard Gold Certified, Lead Free Certified; REACH & RoHS Compliant

Enrich your Acousti-Clear® partitions by adding custom graphics to your SunBloc 9000 Privacy Shade by Draper. Highlight your company's branding or incorporate a variety of images throughout the fabric for a unique, appealing look.

Note: Digital samples are for reference **only** and should be considered illustrative. For a more accurate sample, please contact your local Modernfold Distributor..



215 West New Rd.
Greenfield, IN 46140

Tel: 800-869-9685

Email: info@modernfold.com
Website: www.modernfold.com