



FABRIC SELECTOR

Carnegie Xorel®

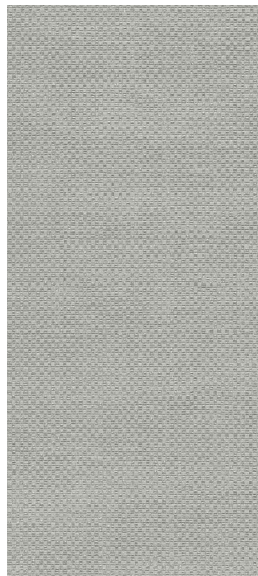


ASHFORD

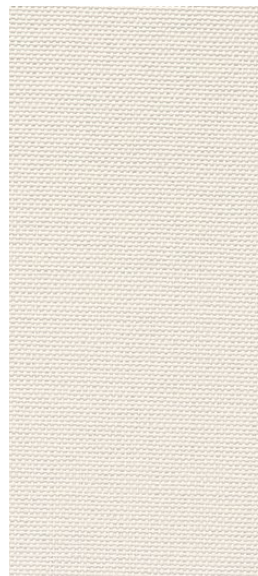
6129HM/41



STRIE 6423HM/830



STRIE 6423HM/807*



METEOR 6427HM/705*



LINEN 6291HM/1



DOVER

6123HM/12



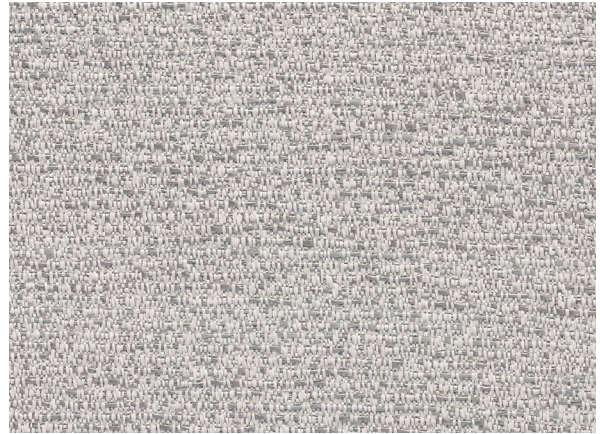
GALWAY

6125HM/24



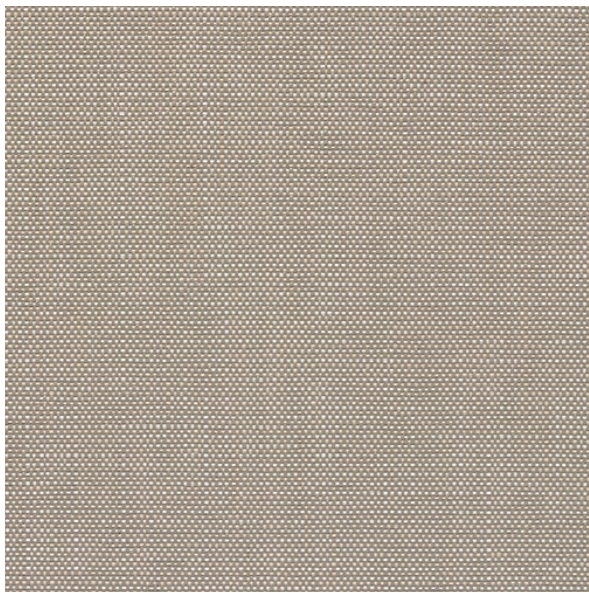
TANGLE

6213HM/8



TANGLE

6213HM/10



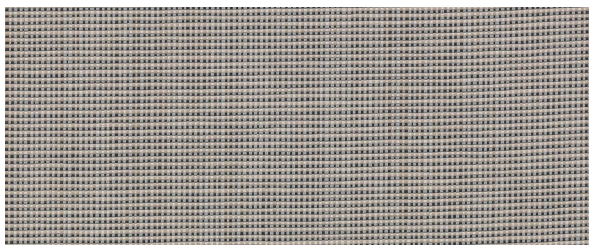
METEOR

6427HM/766



ASHFORD

6129HM/40



MOJAVE MATTE

6091HM/501



WINDSOR 6131HM/30



TWINE 6217HM/33



METEOR

6427HM/769*

PATTERN	CONTENT (100% XOREL®)	WIDTH	ABRASION
ASHFORD 6129	(50% Biobased PE, 50% PE)	56 in (142 cm)	No wear 1 million double rubs
DOVER 6123	(25% Biobased PE, 75% PE)	56 in (142 cm)	No wear 1 million double rubs
GALWAY 6125	(50% Biobased PE, 50% PE)	56 in (142 cm)	No wear 1 million double rubs
LINEN 6291	100% IFR Xorel®	56 in (142 cm)	No wear 1 million double rubs
METEOR 6427	100% IFR Xorel®	56 in (142 cm)	No wear 1 million double rubs
MOJAVE MATTE 6091	(91% Biobased PE, 9% PE)	56 in (142 cm)	No wear 1 million double rubs
STRIE 6423	(85% Biobased PE, 15% PE)	56 in (142 cm)	No wear 1 million double rubs
TANGLE 6213	(42% Biobased PE, 58% PE)	56 in (142 cm)	No wear 1 million double rubs
TWINE 6217	(40% Biobased PE, 60% PE)	56 in (142 cm)	No wear 1 million double rubs
WINDSOR 6131	(25% Biobased PE, 75% PE)	56 in (142 cm)	No wear 1 million double rubs

FLAME RETARDANCY

ASTM E 84 Class A/Class 1, California Technical Bulletin 117-2013 Canadian ULC S102

ECO INFO

Cradle to Cradle Certified™ Silver: ASHFORD, DOVER, GALWAY, LINEN, METEOR, TANGLE, TWINE, WINDSOR

Cradle to Cradle Certified™ Gold: MOJAVE MATTE, STRIE

USDA Certified Biobased Product: ASHFORD, DOVER, GALWAY, MOJAVE MATTE, STRIE, TANGLE, TWINE, WINDSOR

TUV Austria OK biobased - Level 1-4 (ASTM D6866): ASHFORD, DOVER, GALWAY, MOJAVE MATTE, STRIE, TANGLE, TWINE, WINDSOR

25-91% Biobased content derived from rapidly renewable plant

based resources: ASHFORD, DOVER, GALWAY, MOJAVE MATTE, STRIE, TANGLE, TWINE, WINDSOR

All Xorel is SCS Indoor Advantage™ Gold, and contributes to LEED credit points

Free of chlorine, heavy metals, ozone-depleting chemicals, plasticizers, PVC

No topical finishes

Extremely low VOCs, Antimicrobial, Responsible Return Program

Safely Disposable

CLEANING CODES

WS & BC - Water / Solvent & Bleach Cleanable

NOTES

*Nondirectional - Individual colors subject to approval.

Samples shown are representative pattern samples. All colorways per pattern shown are available and application approved. Full colorways and a summary of the results of 65 independent tests on Xorel, and all HPD's, are available at carnegiefabrics.com

